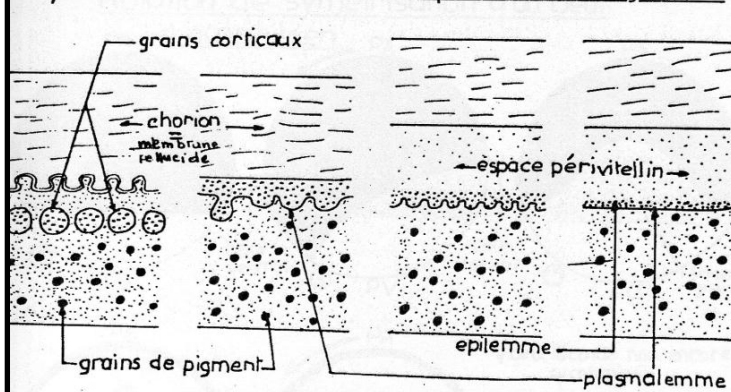


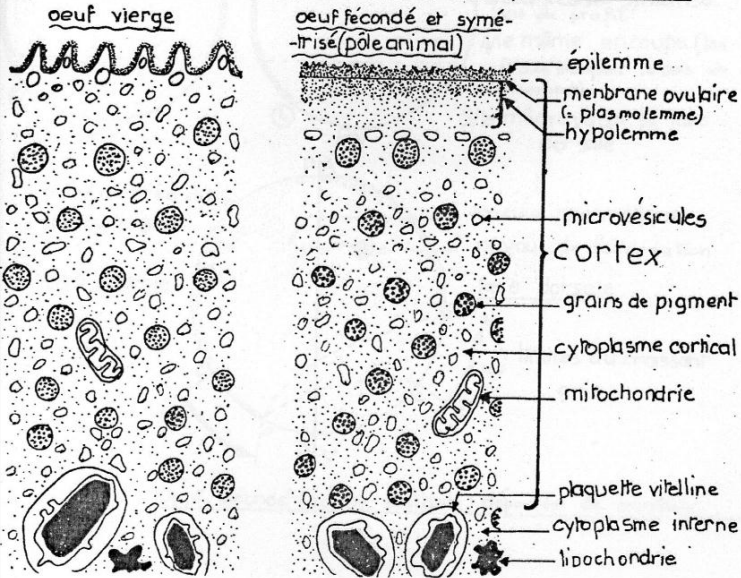
Embryogénèse des Amphibiens

Réaction corticale chez les amphibiens

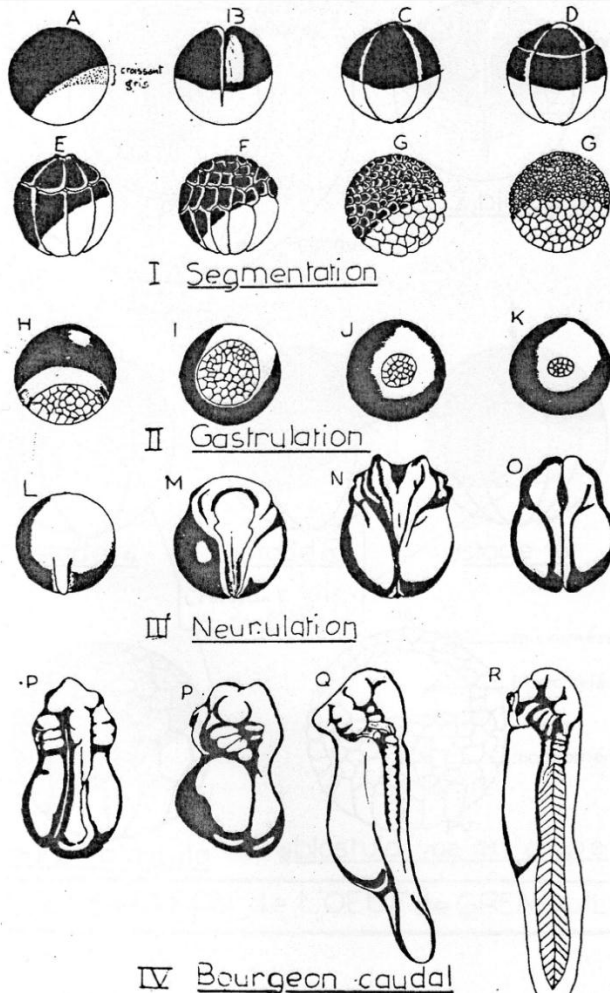
a) Modifications du cortex et du matériel périvitellin chez la grenouille



b) Modifications du cortex de l'oeuf de Triton après fécondation

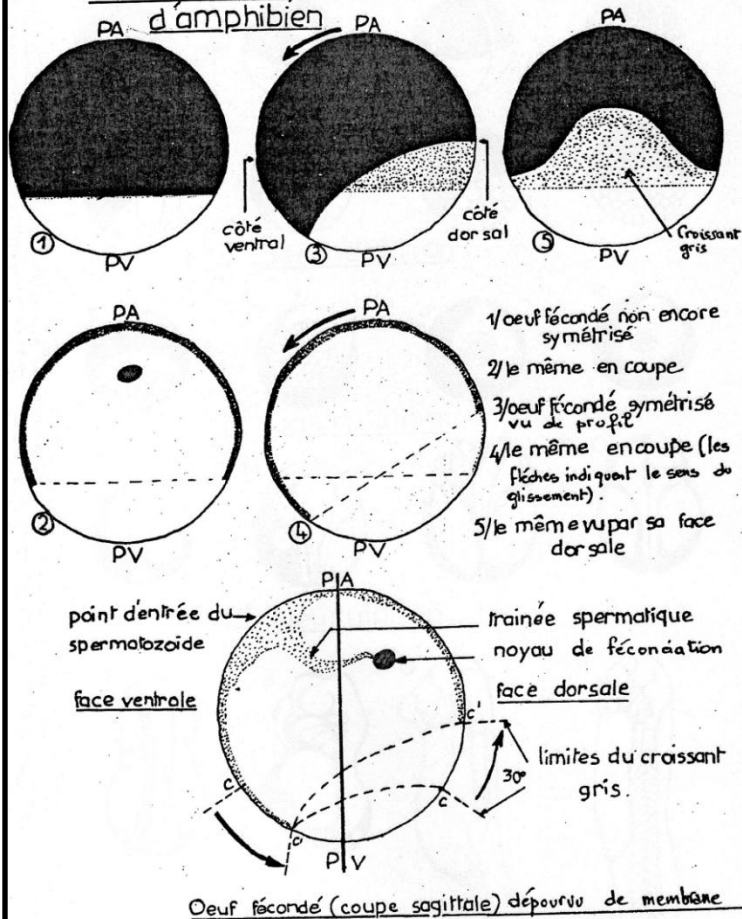


Grandes étapes du développement embryonnaire chez les amphibiens (vue externe)

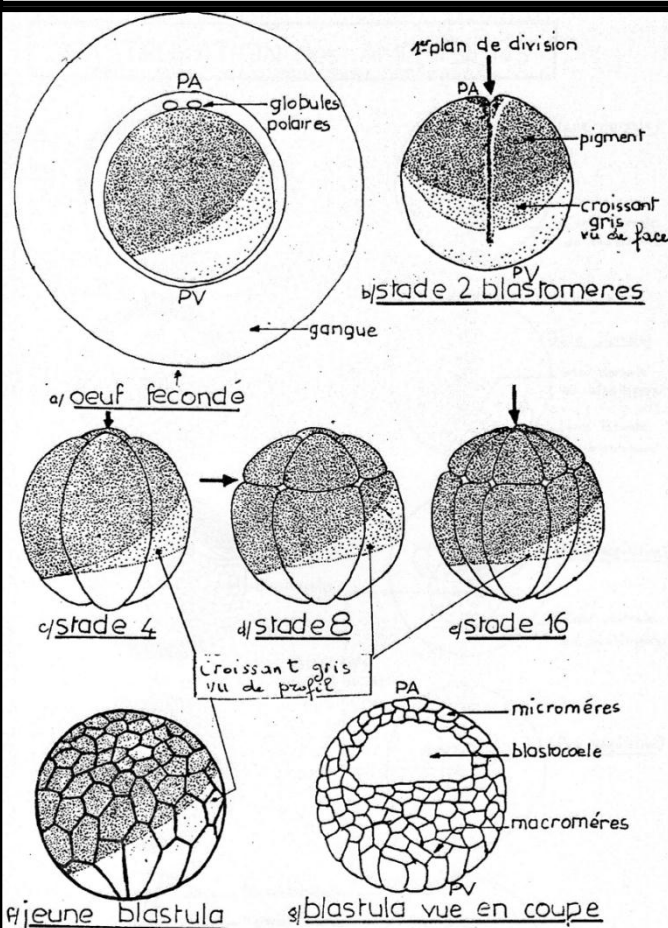


Symétrisation

Rotation de symétrisation d'un oeuf d'amphibien



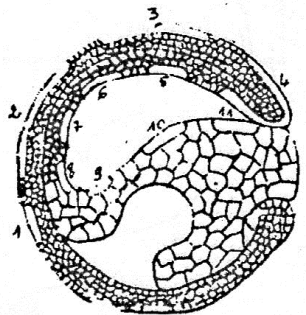
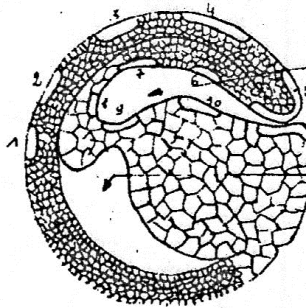
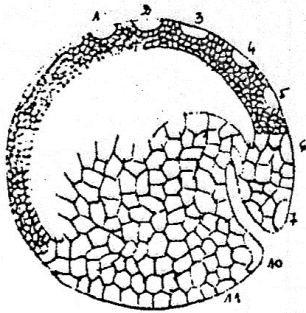
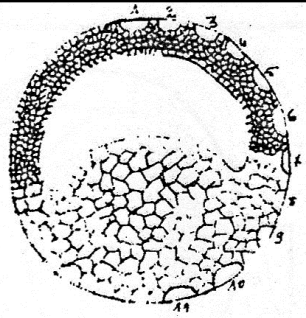
Segmentation de l'oeuf après la fécondation



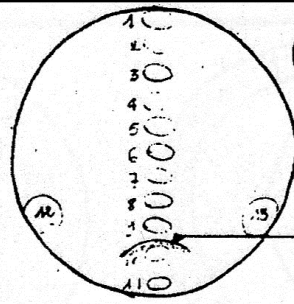
Gastrulation des amphibiens

(Technique des marques colorées : Carte des territoires présomptifs)

Coupes
sagittales

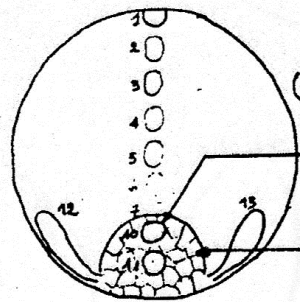


Archenteron
Blastocoel



(face dorsale)

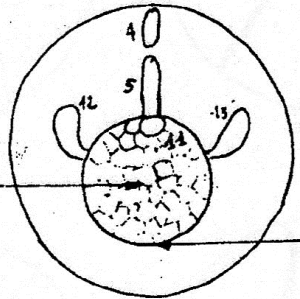
lèvre dorsale
du blastopore



(face dorsale)

lèvre dorsale
du blastopore

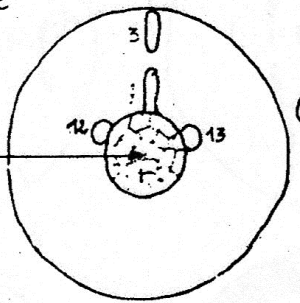
lèvre latérale
du blastopore



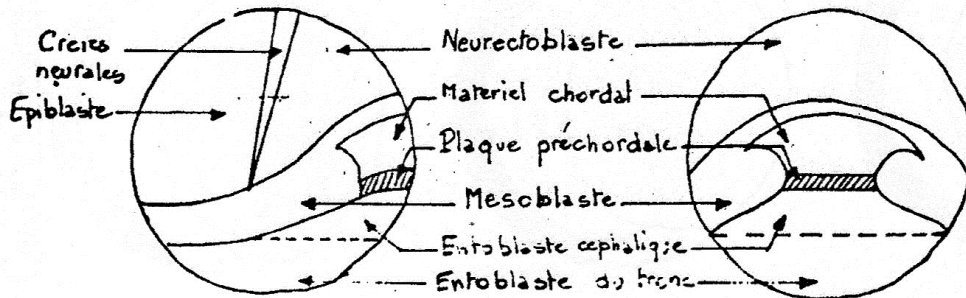
(face végétative)

lèvre ventrale
du blastopore

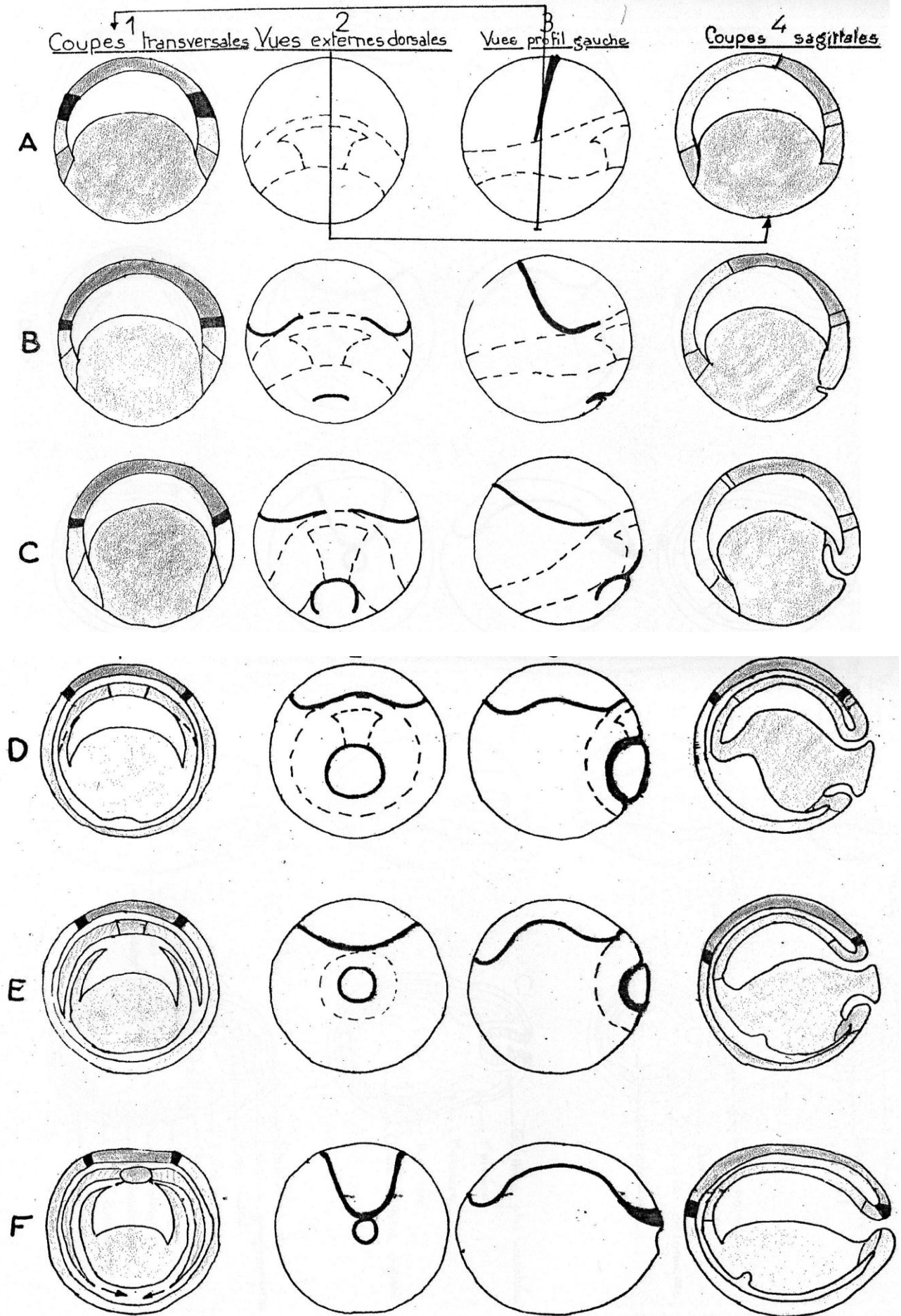
Bouchon
vital lin de
RUS CONI



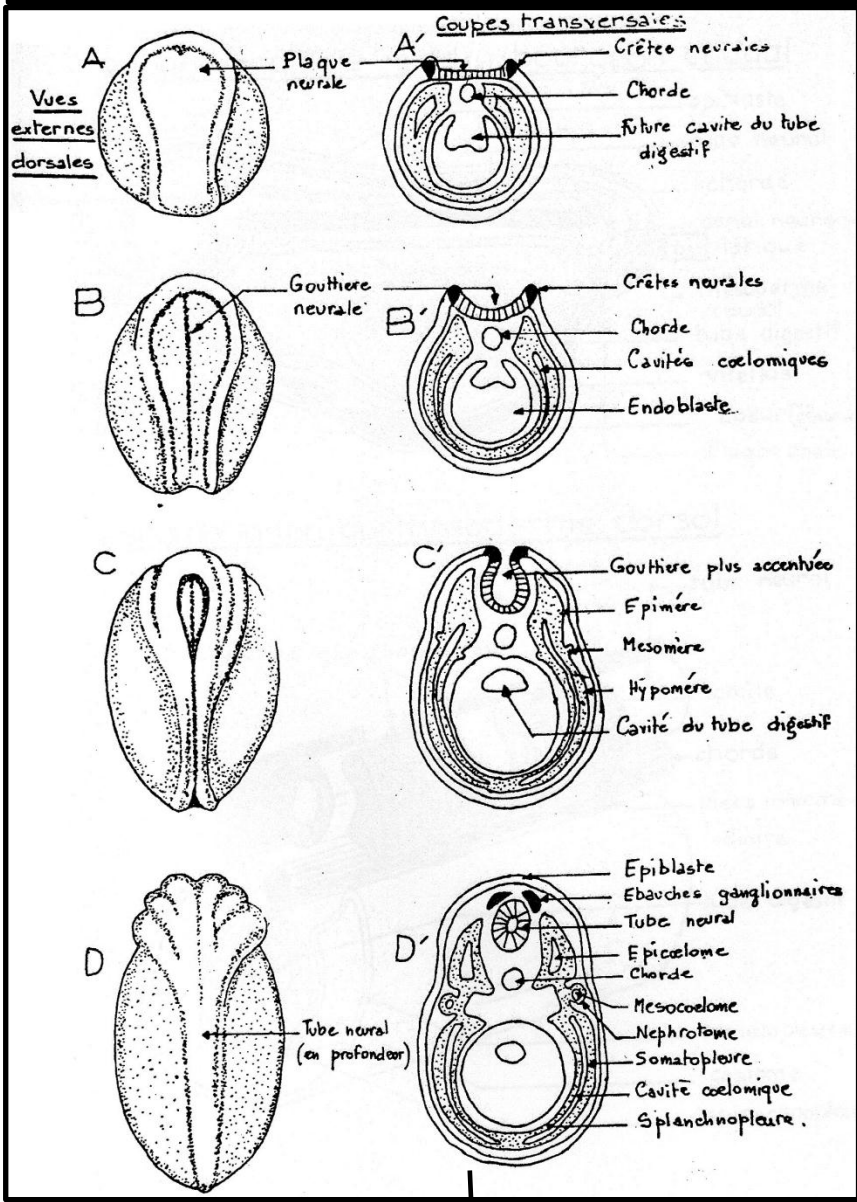
(face végétative)



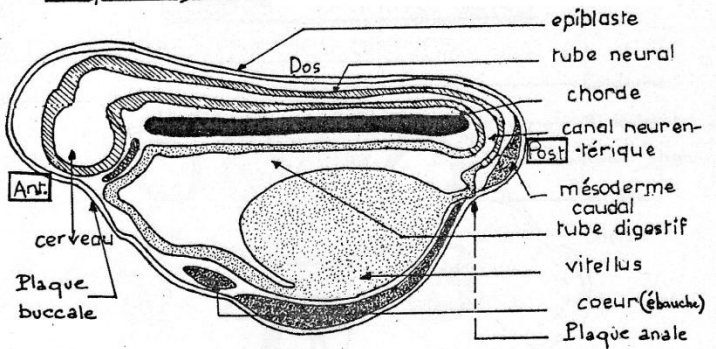
Evolution des territoires présomptifs pendant la gastrulation (amphibiens)



Neurulation des amphibiens



* coupe sagittale



* segmentation du mésoderme dorsal

