

Fig. 1 : Schéma d'un chloroplaste

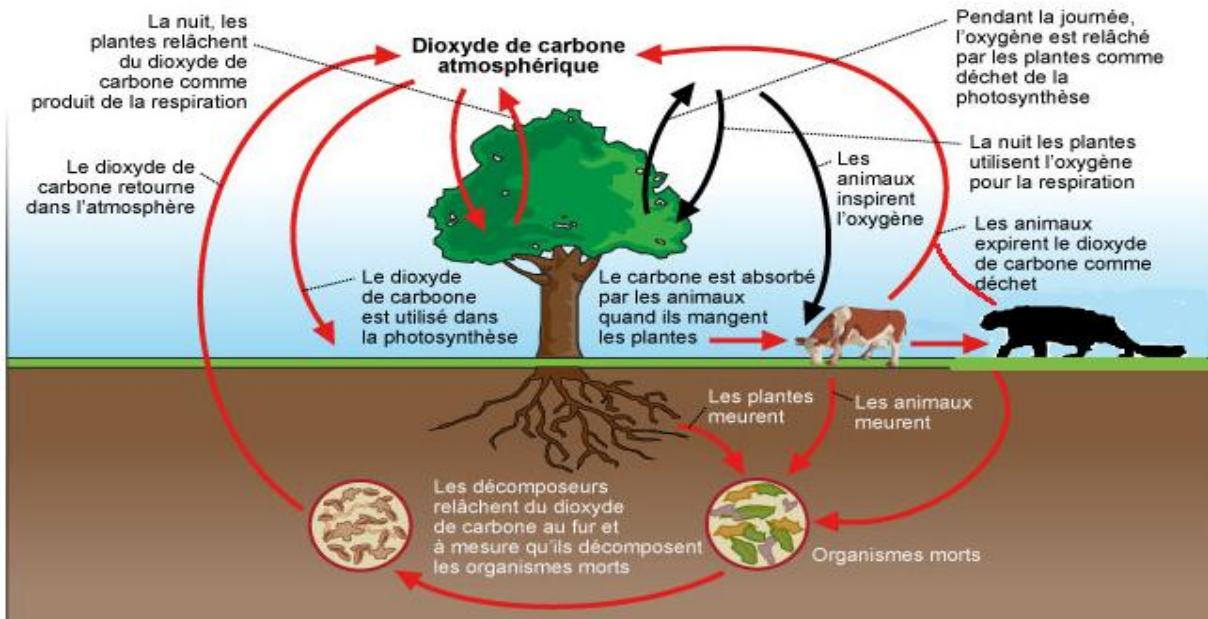


Fig.2 : Cycle du carbone

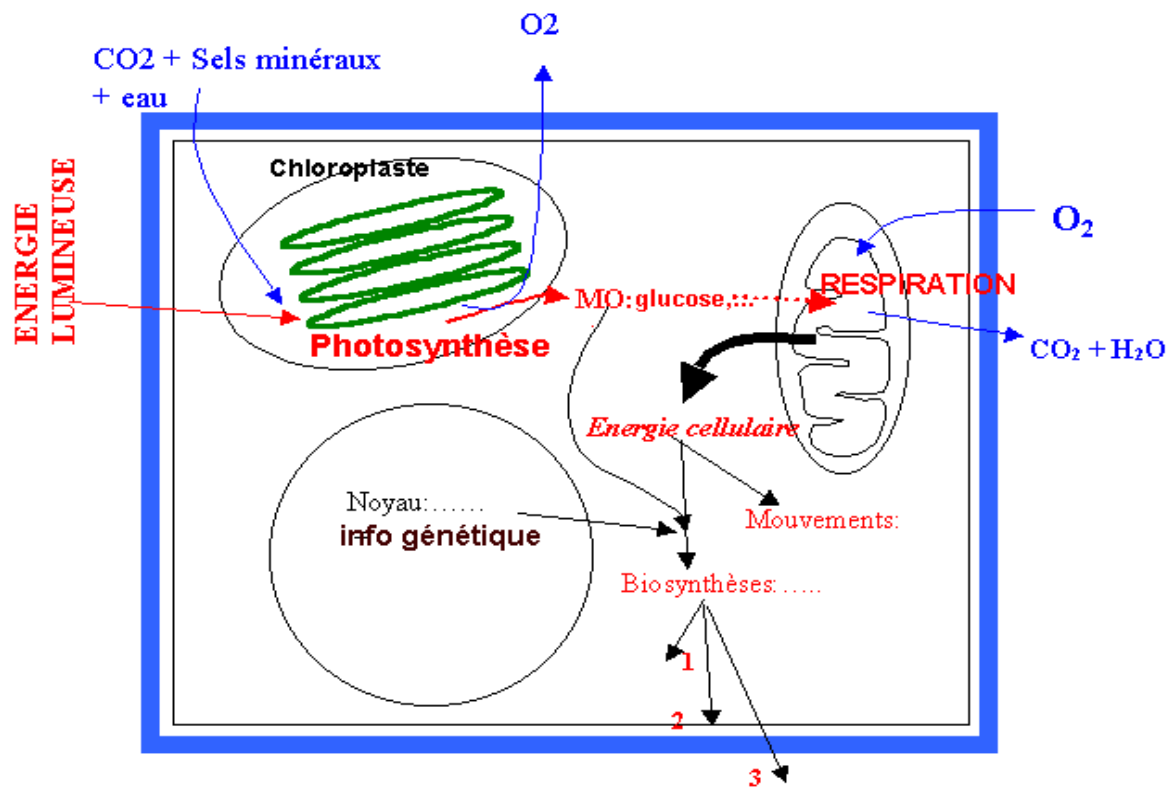


Fig.3 : Bilan de l'autotrophie

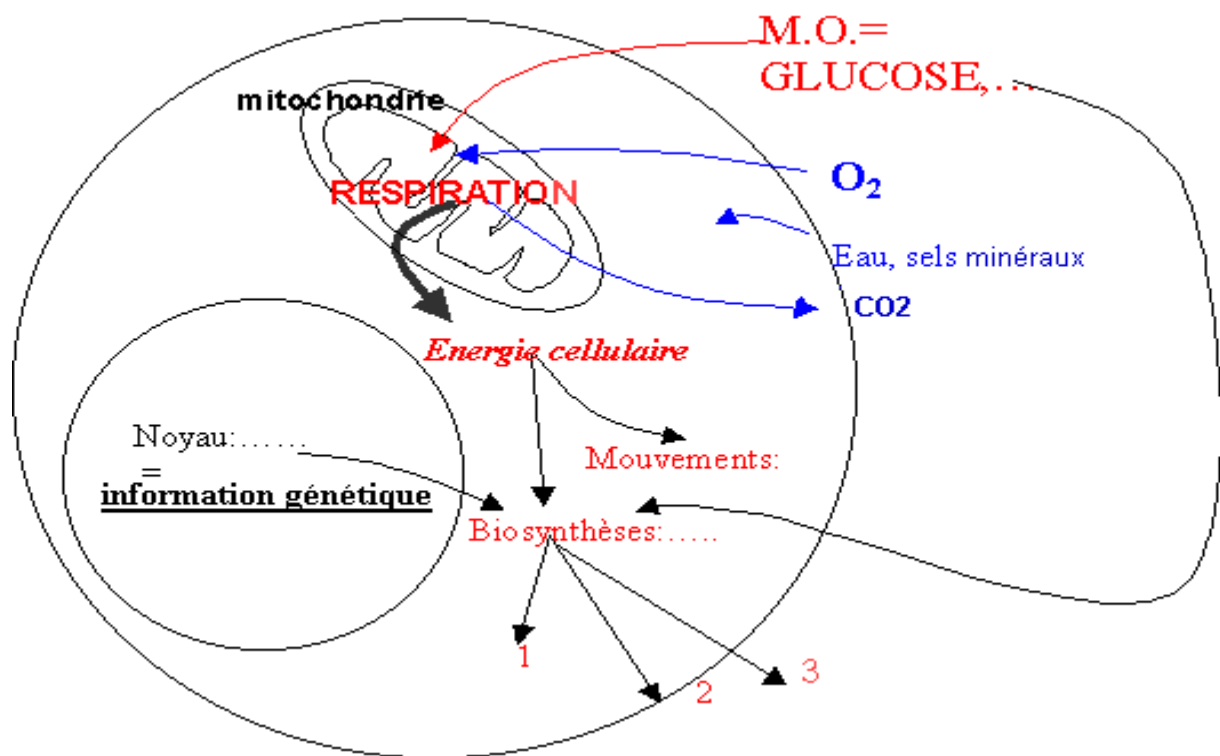


Fig.4 : Bilan de l'hétérotrophie

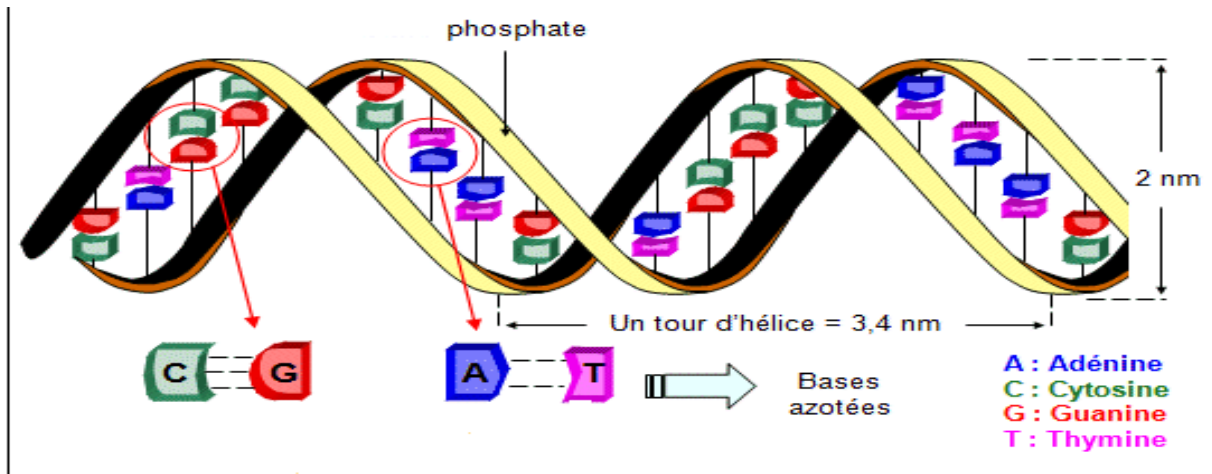


Fig.5 : La structure de l'ADN en double hélice selon Watson et Crick (1953)

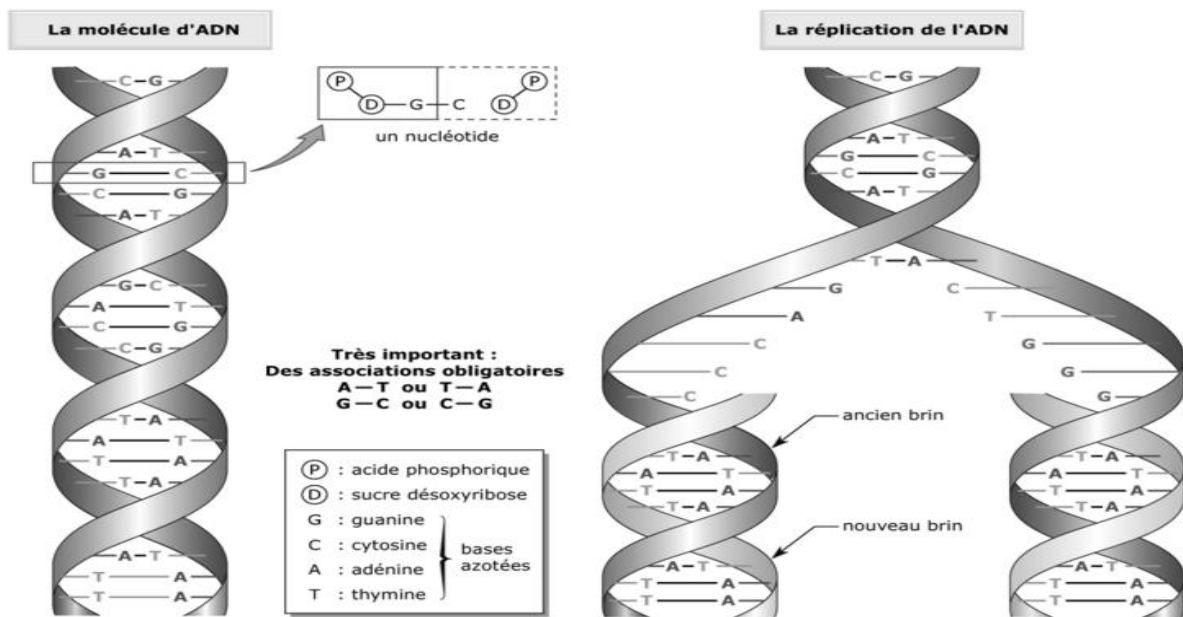
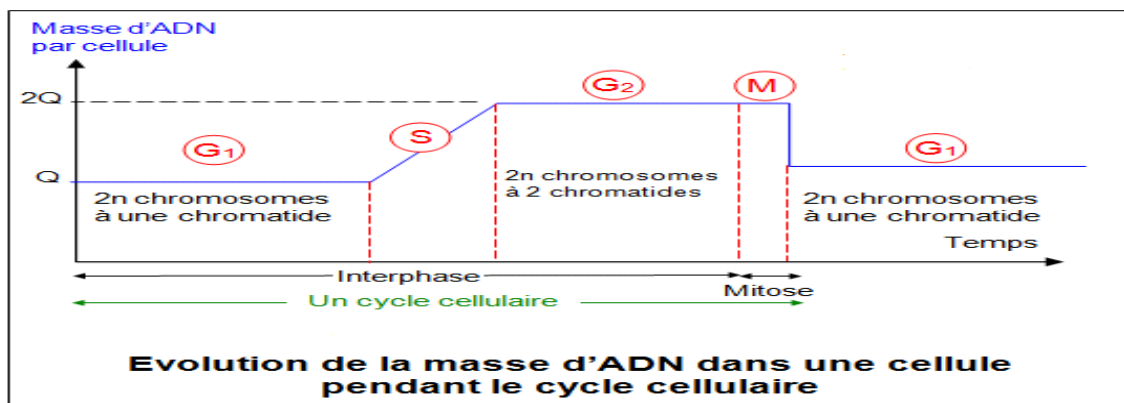


Fig.6 : Réplication de l'ADN



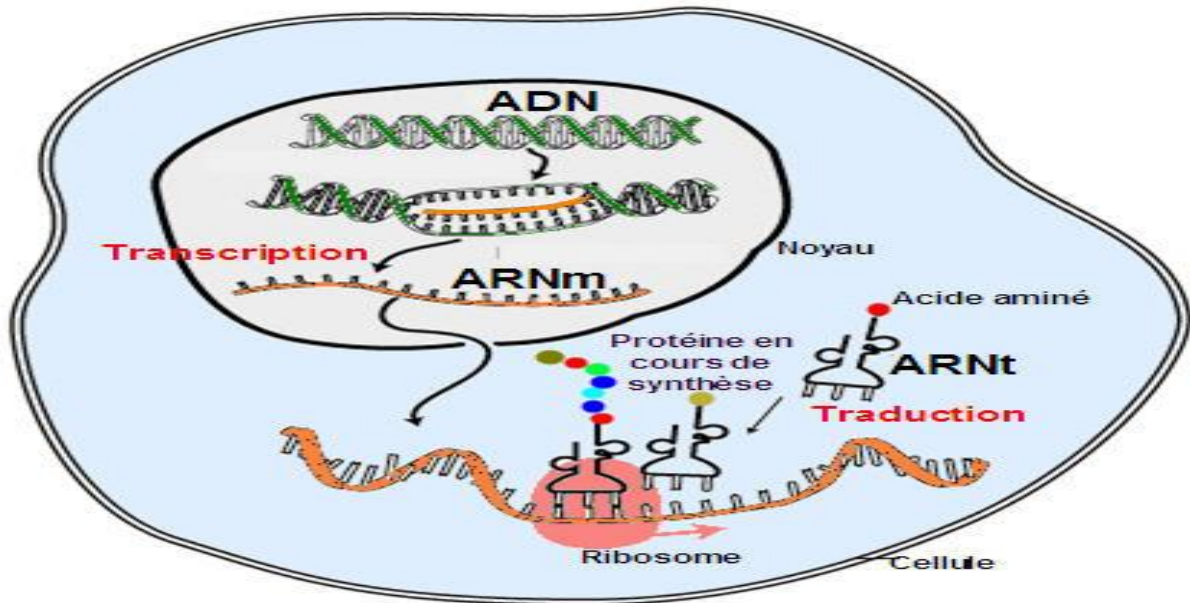


Fig. 8 : synthèse des protéines

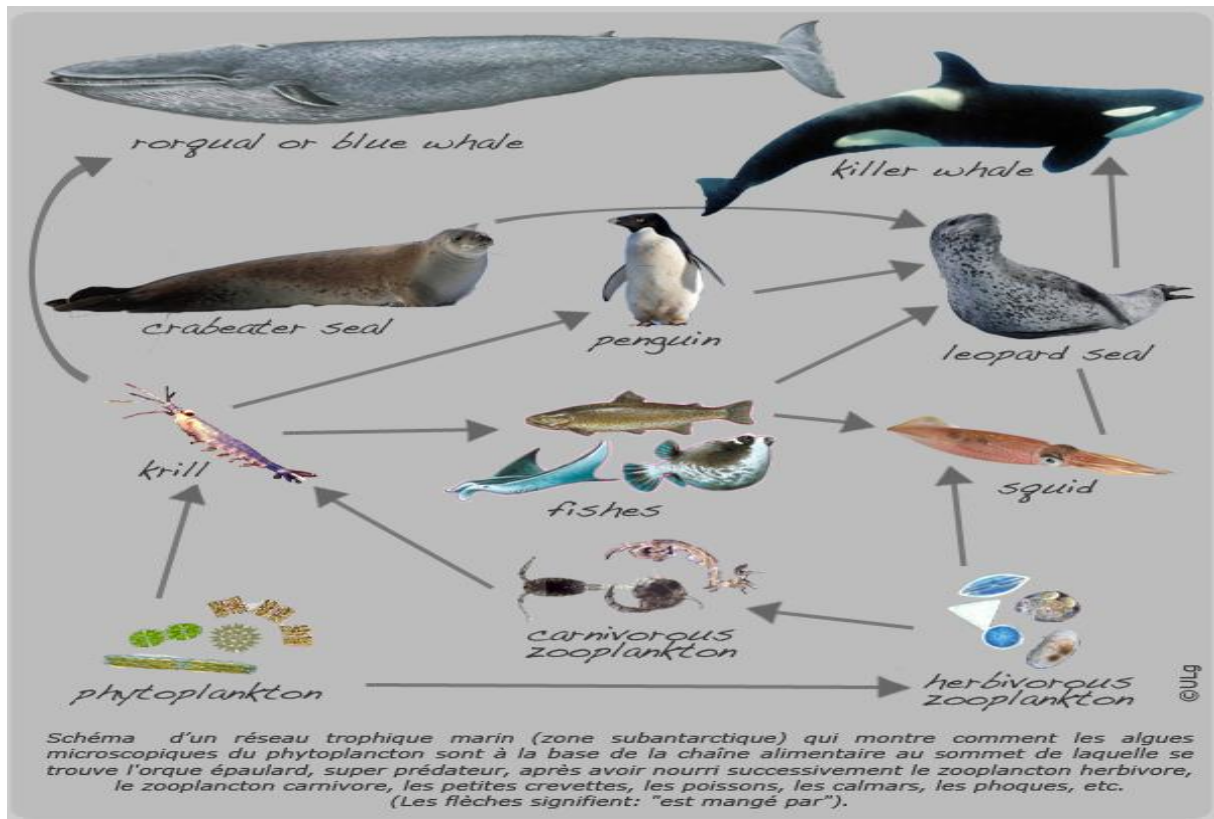


Fig. 9 : Exemple d'une chaîne alimentaire dans un milieu aquatique.